

# Return to form

Bidding adieu to Europe, this globetrotting family finally returned home to Melbourne to enjoy a contemporary new home that celebrates sunshine, style and space.

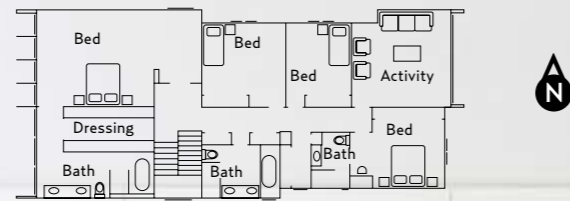
STORY & STYLING JULIA GREEN ♦ PHOTOGRAPHY ARMELLE HABIB

**POOL** "The fact that we can swim, barbecue, cook and relax, all at the same time in one big space, is fabulous," says owner Kylie Evans of her family's versatile outdoor space." Towel, Ziporah. Artworks by Julia Crawford. Pool by Integrated Pools. For Where to Buy, see page 259.

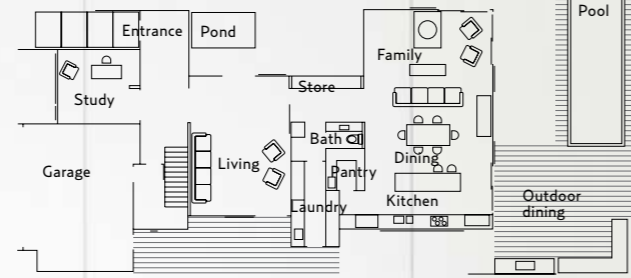
Stylist's assistant Deanna Corso.

*This is the life*  
After a hectic working week, this property offers blissful respite for the Evans family. Walks in the neighbourhood with labrador Frodo are a treasured pastime, as are alfresco dinners and chilling out in a choice of social and private zones. "With the house so well designed, it means everyone has their own space, but we all enjoy coming together at meal times," says Kylie.

FIRST FLOOR



GROUND FLOOR



Few people buy a home from the other side of the world, let alone bid at auction by phone in the middle of the night. But after 10 years of living abroad, Luxembourg-based expats Mark and Kylie Evans were keen to settle in Australia again. So in 2008 they bought this property in a leafy south-eastern suburb of Melbourne, with the idea of later demolishing the existing house and returning to a newly built home.

Fast forward to 2012 and with a homecoming on the cards, the couple fell in love with a Lubelso concept home by the Canny Group and knew it would be perfect for their site. They engaged the associated design studio, Canny Architecture, to finetune the layout, finishes and interiors for a bespoke solution.

“Living abroad meant we needed an all-in-one design process, so Canny was a wonderful fit for us,” says Kylie. “After many Skype calls, emails and a fleeting visit with the team to finalise the fittings and fixtures, we were on our way.”

The Evans family made a permanent return in January 2013, in time for children Hamish, now 17, and Daisy, 13, to start the school year. The build was only half complete by that time but the family moved in anyway and embraced the situation with enthusiasm, watching their home take shape around them each day. “Being so close to the action was really convenient and helped make for speedy final decisions and last-minute changes,” says Kylie.

The result is a highly considered and personalised home defined by great attention to detail, with versatile spaces that allow the family to comfortably live indoors and out, together or privately. >

**‘TO BE ABLE TO ANGLE THE SUSPENDED FIREPLACE ANY WAY WE LIKE, WHILE SIPPING WINE, IS UTTER LUXURY.’ KYLIE**

**INFORMAL LIVING** The suspended rotating fireplace is one of the family’s favourite features. A leather sofa from London store Heal’s, a rug purchased at New York’s Museum of Modern Art and vintage Danish finds reflect the owners’ global travels. The artwork is a stretched piece of Mirakel 315 linen in Brown from Svinnest Tenn. ErgoFocus fireplace, Oblica.

**KITCHEN** Kylie at the long Corian benchtop, which affords her ample working space. To the right of the bench is a concealed butler’s pantry. “With the amount of entertaining we do, it’s wonderful to have a designated place for mess,” she says. Stools, Clickon Furniture. Flooring is American oak with a black japan finish. For Where to Buy, see page 259.

*Thrill of the new*

"Opting for a customised pre-designed home gave us great flexibility in tailoring its features to suit our block and our aesthetic," says Kylie. Oversized doors and expansive use of glass were just some of the elements used to reflect the owners' love of contemporary design. "We loved watching the house unfold before our eyes and embraced every part of the experience. After a decade of European living, it was very exciting to start afresh with a blank canvas and create our own home."



'LIVING IN LUXEMBOURG, I WAS ABLE TO FIND VINTAGE EUROPEAN FURNITURE AND HAVE IT RESTORED BY LOCAL CRAFTSPEOPLE.' KYLIE

**< DOWNSTAIRS BATHROOM** "The Mis en Plis wallpaper packs a good decorative punch in this small space," says Kylie. Villerory & Boch basin, Argent Australia. Wallpaper, Elitis. Flowers, Fleur.

**MAIN ENSUITE** A skylight directs dramatic lighting to this freestanding Kaldewai bath from Reece. Towels, Safari Living.

**STUDY** Kylie has furnished her workspace with restored classics, including a rosewood desk by Danish designer Arne Vodder.

**MAIN BEDROOM** A sliding door separates sleeping and dressing zones. Bed, Meizai. Kandy After All wallpaper, Elitis. Ombre Forest throw, Safari Living.

**Designer buy: Tolomeo Basculante table lamp, \$589, Artemide.**

For Where to Buy, see page 259. >



◀ Behind the pivoting 3m-high front door, a wide hallway opens to a study on one side and an elegant formal living area on the other. The latter leads to an open-plan kitchen, dining and family living zone, with views to the pool and paved alfresco area through glass sliding doors. This informal indoor-outdoor nexus is where family members spend the bulk of their time, whether entertaining friends, swimming in summer or warming themselves by the fireplace in cooler months.

Upstairs there are four bedrooms and three bathrooms as well as a dedicated teen retreat, part of a strategic decision to give parents and children their own social zones. At the planning stage, this meant paying particular attention to noise minimisation. “So much so that I regret not including an intercom to announce dinnertime,” says Kylie with a laugh. “I currently have to SMS them as they can’t hear me upstairs!”

Given the family’s time overseas, it was inevitable that pieces collected during their travels would feature in their new home. French wallpapers, a 300-year-old Moroccan door and vintage Scandinavian chairs are a few of the many treasures that have been respectfully incorporated into the custom interiors.

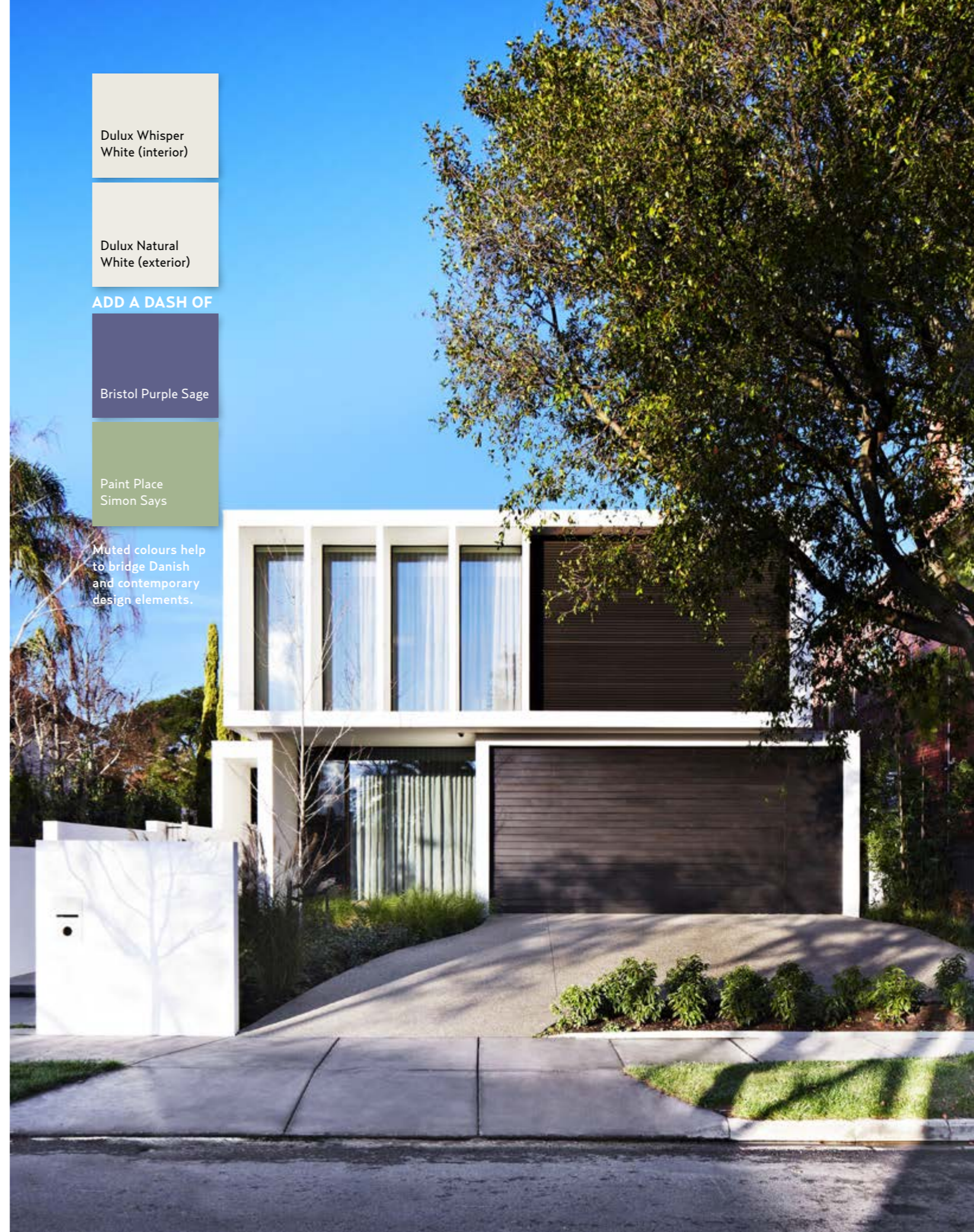
It would seem that the Evans family are back to stay. “Although we will miss many aspects of Europe – especially our friends, and the cheese and chocolate – we are thrilled to be home,” says Kylie. “It was all well worth the wait.” #

Lubelso, Hawthorn East, Victoria; (03) 8532 4400 or [www.lubelso.com.au](http://www.lubelso.com.au). Canny Architecture, Hawthorn East, Victoria; (03) 8532 4444 or [www.canny.com.au](http://www.canny.com.au).

**‘AFTER LIVING IN THE NORTHERN HEMISPHERE FOR SO LONG, IT’S A LUXURY TO START THE DAY WITH A SWIM.’ KYLIE**

**OUTDOOR DINING** This elegant alfresco area offers a prime spot for entertaining. “We seated 26 people here for Christmas without feeling remotely cramped,” says Kylie. Coffee table and black chairs, The Industrial Revolution. Outdoor table and chairs, Habitat, London. Cushions in MissoniHome fabrics. For similar bluestone pavers, try Eco Outdoor. Flowers by Fleur. **Smart buy:** For similar timber outdoor dining table, try the Mimosa Brighton table, \$199, Bunnings. **STREETFRONT** Custom tweaking of the original Lubelso design concept has made the most of this block’s northern orientation. Landscaping by Ben Scott Garden Design. For Where to Buy, see page 259.

Paint colours are reproduced as accurately as printing processes allow.



Dulux Whisper White (interior)

Dulux Natural White (exterior)

ADD A DASH OF

Bristol Purple Sage

Paint Place Simon Says

Muted colours help to bridge Danish and contemporary design elements.